

# STOFFEN & KLEUREN

DAMATRA  
ESSENTIAL

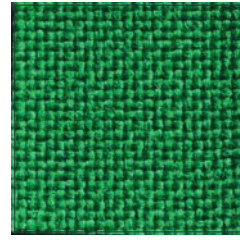
# CATEGORIE 1 MADRID



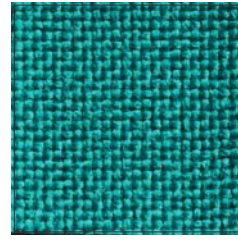
fire proof class 1IM



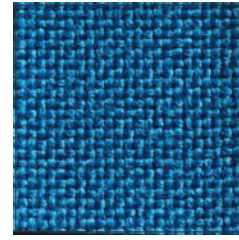
MD 515



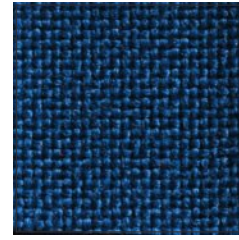
MD 506



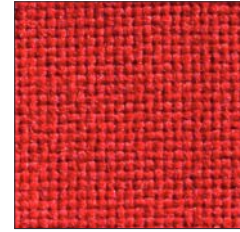
MD 509



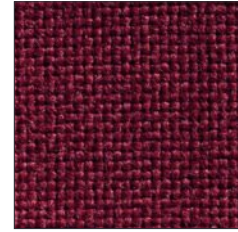
MD 529



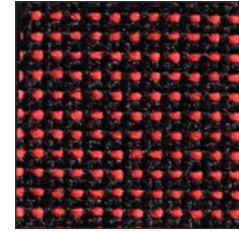
MD 510



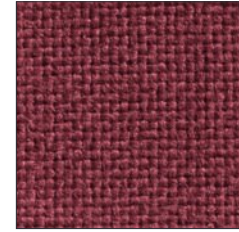
MD 502



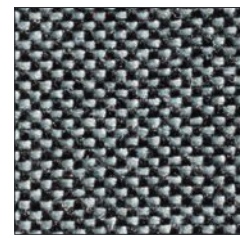
MD 530



MD 520



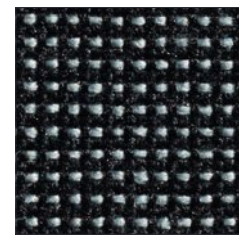
MD 505



MD 519



MD 514



MD 518



MD 511

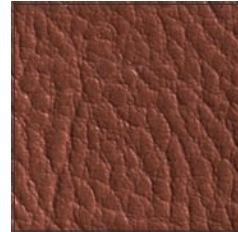
# CATEGORIE 1 COVE



C 539



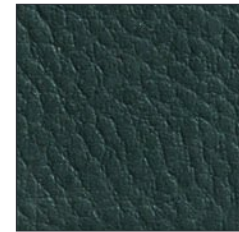
C 21



C 301



C 336



C 196



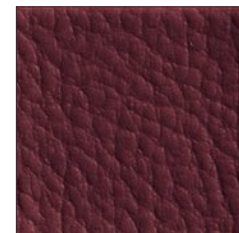
C 238



C 371



C 441



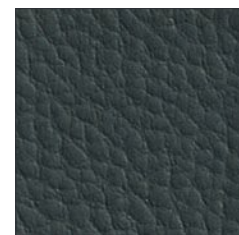
C 413



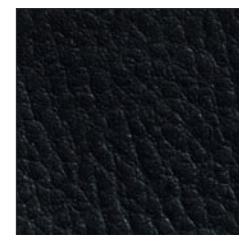
C 1



C 84



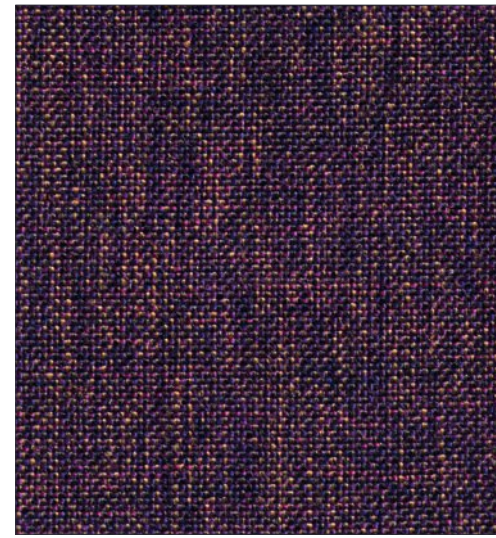
C 98



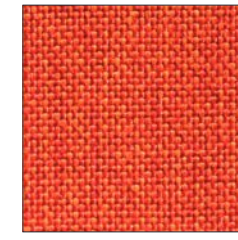
C 560

# CATEGORIE 2 ANGEL

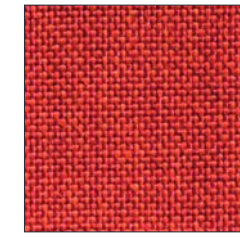
fire proof class 1IM



AN 38



AN 30



AN 35



AN 45



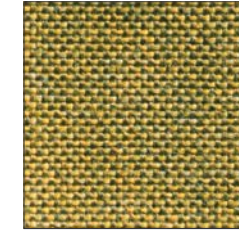
AN 20



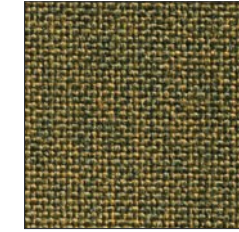
AN 53



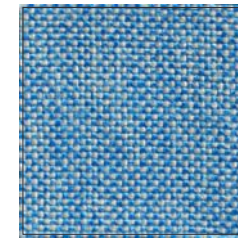
AN 50



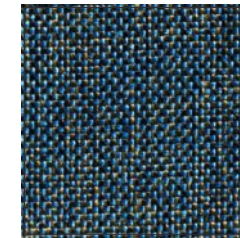
AN 41



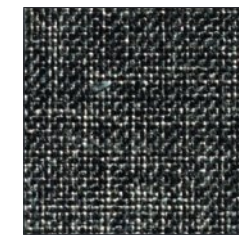
AN 09



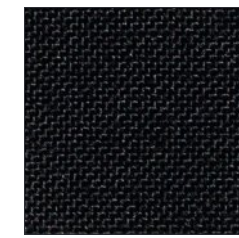
AN 55



AN 39



AN 56

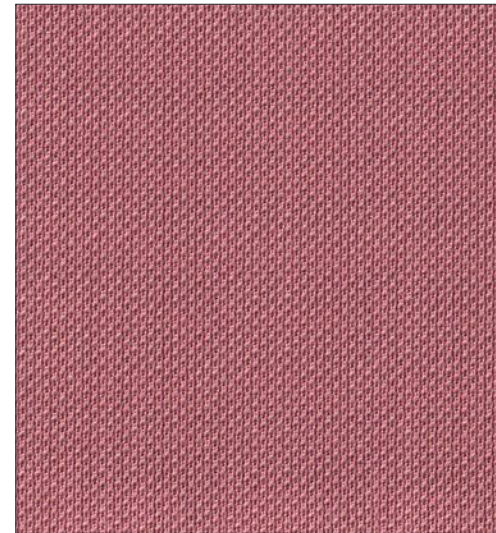


AN 57

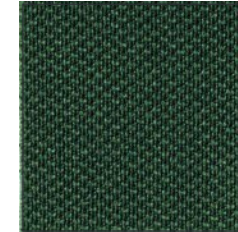
# CATEGORIE 2 ONE



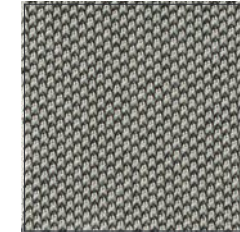
fire proof class 1IM



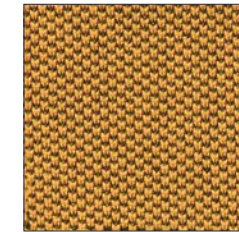
ON 4067



ON 7029



ON 1506



ON 3530



ON 4028



ON 7033



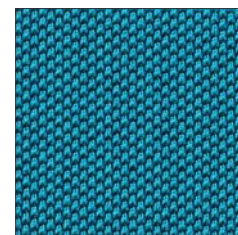
ON 2519



ON 3008



ON 4566



ON 6591



ON 6512



ON 6017



ON 8032



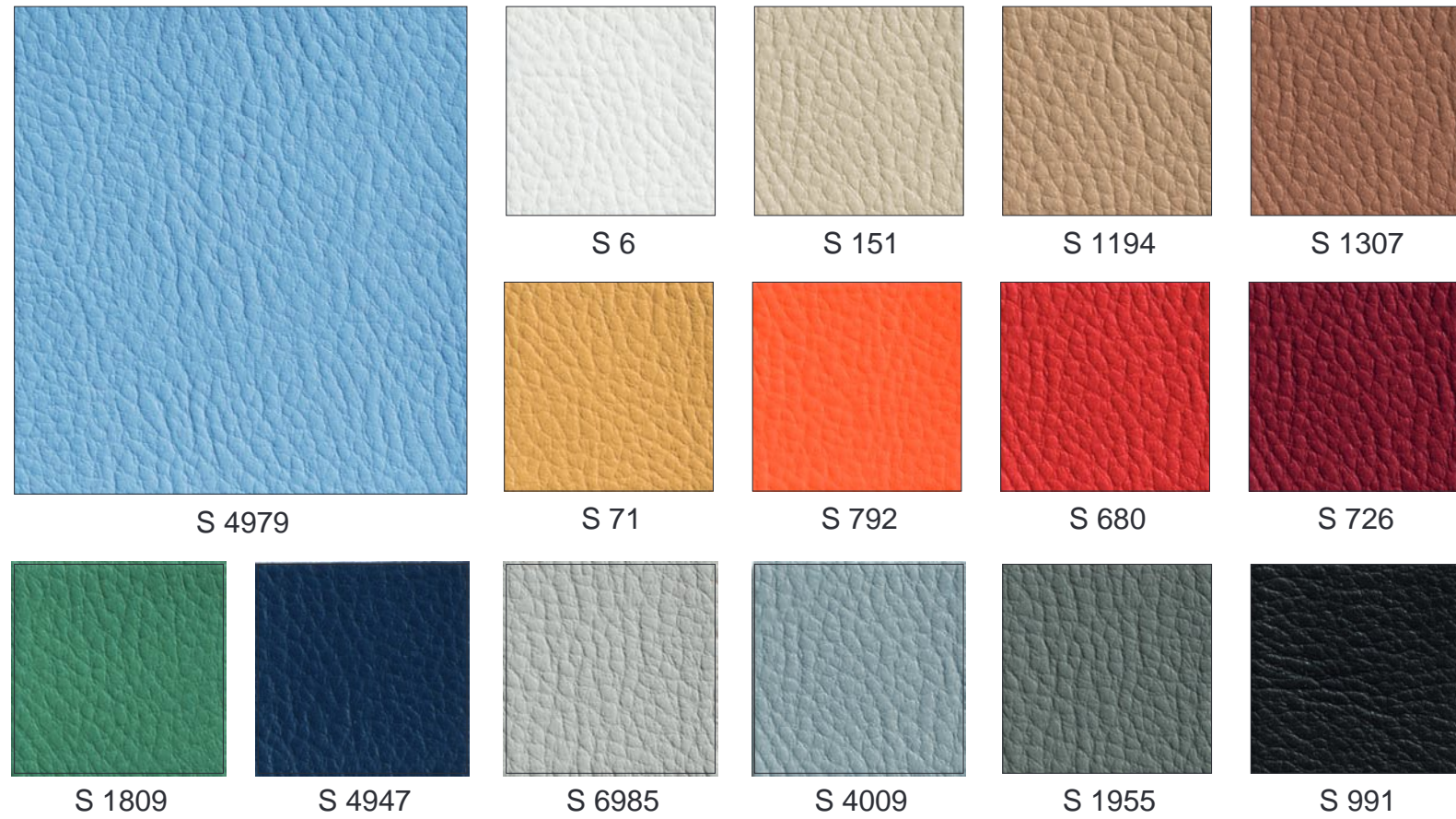
ON 8017



ON 8033

## CATEGORIE 2 GAZEBO

ignifugo classe 1IM  
fire proof class 1IM



## CATEGORIE 2 KING-FLEX



fire proof class 1IM



## CATEGORIE 3 SECRET

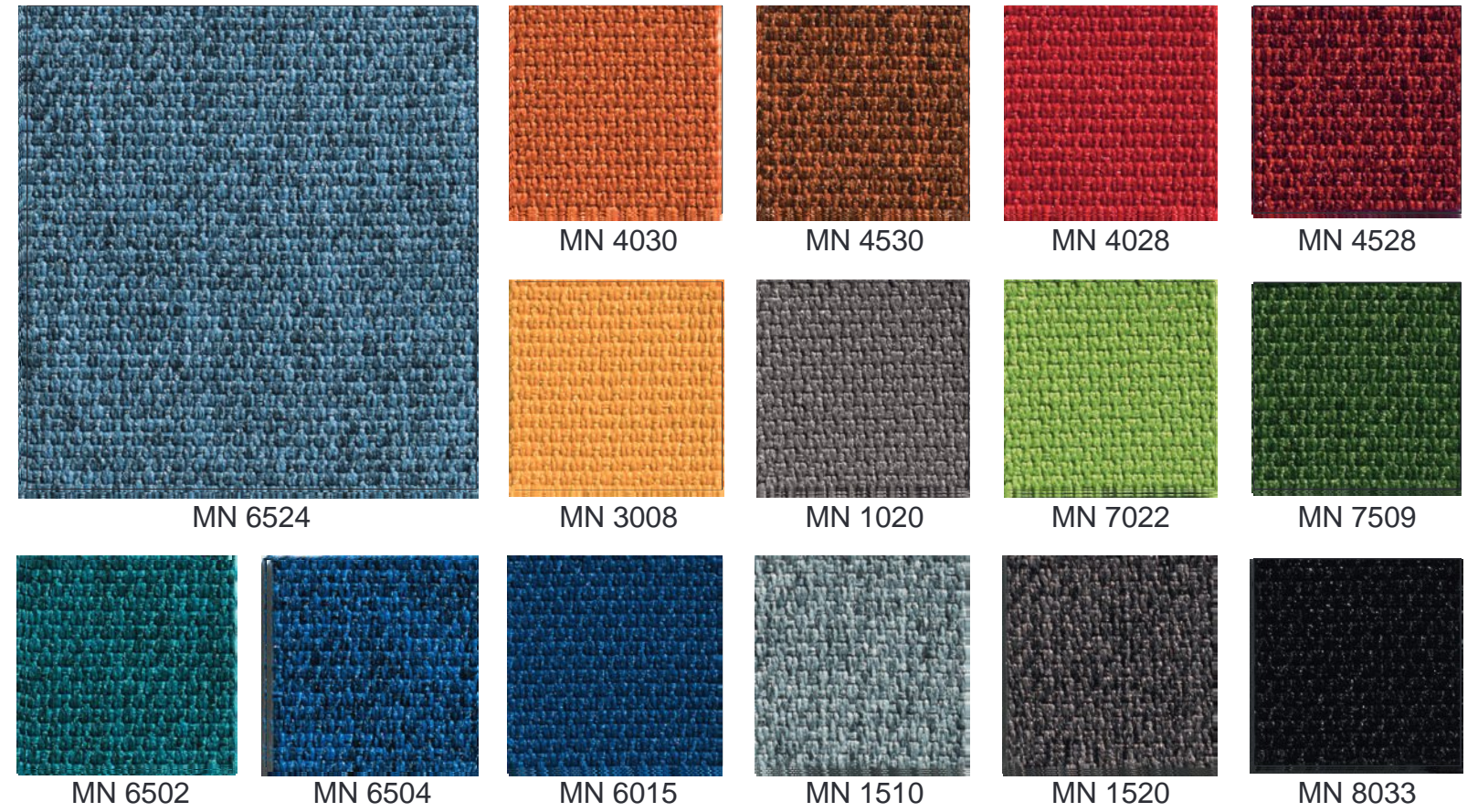
ignifugo classe 1IM  
fire proof class 1IM



## CATEGORIE 3 MINI



fire proof class 1IM



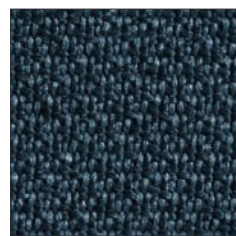
## CATEGORIE 3 SEALIFE



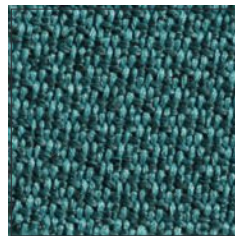
fire proof class 1IM



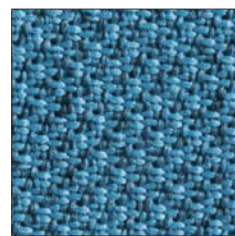
SL 1506



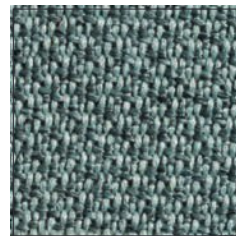
SL 8517



SL 7504



SL 6524



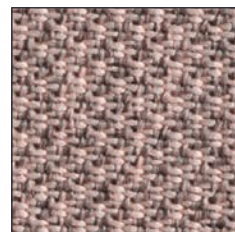
SL 8532



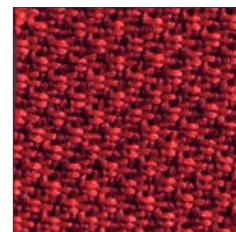
SL 2519



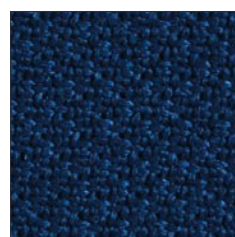
SL 3509



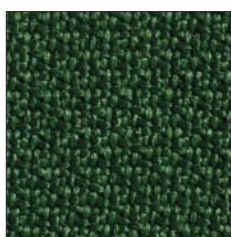
SL 4522



SL 4528



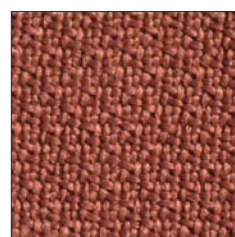
SL 6080



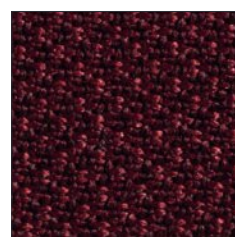
SL 7029



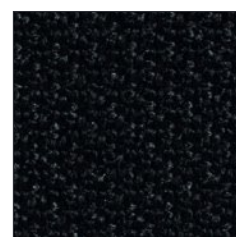
SL 2007



SL 4037



SL 4503



SL 8033

## CATEGORIE 4 PELLE/LEATHER

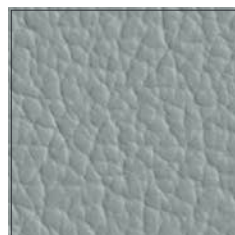
pelle vera  
genuine leather



P 9027



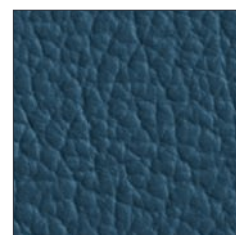
P 9003



P 9033



P 9045



P 9031



P 9004



P 9038



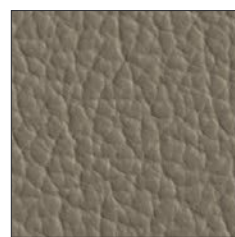
P 9030



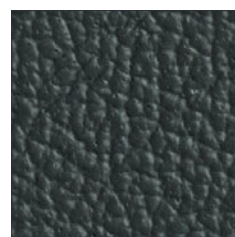
P 9017



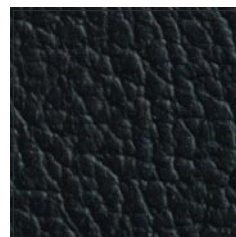
P 1



P 84



P 98



P 560

## CATEGORIE 1

### MADRID

± 230 g/mq  
100% PP polipropilene F.R.  
100% PP Polypropylene F.R.  
80.000 cicli martindale  
80.000 martindale cycles  
Resistenza al fuoco/Flammability  
CLASSE 1 IM - UNI 9175  
EN 1021 - 1/2  
BS 5852 /2 - CRIB 5  
California TB 117

### COVE

± 565 g/mq  
82% PVC - 7% Cotone  
11% Poliestere  
82% PVC - 7% Cotton  
11% Polyester  
50.000 cicli martindale  
50.000 martindale cycles

## CATEGORIE 2

### ANGEL

± 228 g/mq  
100% polipropilene F.R.  
100% polypropylene F.R.  
100.000 cicli martindale  
100.000 martindale cycles  
Resistenza al fuoco/Flammability  
CLASSE 1 IM - UNI 9175  
EN 1021 - 1/2  
BS 5852 /2 - CRIB 5  
California TB 117

### GAZEBO

± 640 g/mq  
87,5% Polivinilcloruro plastificato -  
12,5% Cotone  
87,5% Plasticized polyvinylchloride -  
12,5% Cotton  
50.000 cicli martindale / 50.000  
martindale cycles  
Resistenza al fuoco/Flammability  
CLASSE 1 IM - UNI 9175  
BS 7176  
EN 1021-1/2  
California TB 117

### ONE

± 350 g/mq  
100% poliestere riciclato  
100% recycled polyester  
100.000 cicli martindale  
100.000 martindale cycles  
Resistenza al fuoco/Flammability  
CLASSE 1 IM - UNI 9175  
BS 7176  
EN 1021 - 1/2  
BS 5852 /2 - CRIB 5  
California TB 117

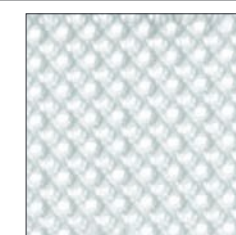
### KING-FLEX

± 300 g/mq  
100% poliestere Trevira CS  
100% Polyester Trevira CS  
100.000 cicli martindale  
100.000 martindale cycles  
Resistenza al fuoco/Flammability  
CLASSE 1 IM - UNI 9175  
BS 7176  
EN 1021 - 1/2  
BS 5852 /2 - CRIB 5  
California TB 117

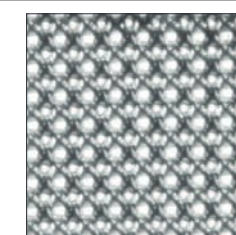
## RETE MESH

Composizione/Composition:  
100% poliestere - martindale: 25.000 cicli  
100% polyester - martindale: 25.000 cycles

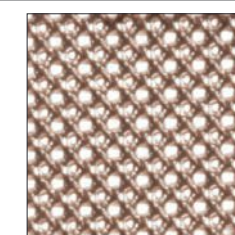
Su richiesta/Upon request:  
RETE NERA M10 disponibile in  
versione ignifuga (M10 FR)  
BLACK MESH M10 is also available  
with fire proof treatment (M10 FR)



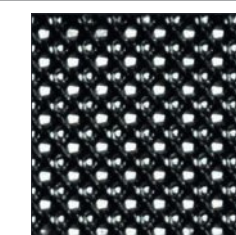
M 2



M 3



M 4

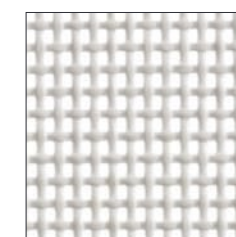


M 10

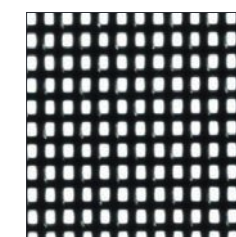
Disponibile solo per modello Synchronet

Available for Synchronet model only

Composizione/Composition:  
70% polivinile-30% PES  
martindale: 100.000 cicli  
70% polyvinyl-30%PES  
martindale: 100.000 cycles



M 200



M 100

## CATEGORIE 3

### SECRET

± 540 g/mq  
76% PVC - 2% PU - 22% PES  
76% PVC - 2% PU - 22% PES  
60.000 cicli martindale  
60.000 martindale cycles  
Resistenza al fuoco/Flammability  
CLASSE 1 IM - UNI 9175  
EN 1021 - 1/2  
California TB 117  
Impermeabile/resistente ai  
raggi UV/adatto per esterno/  
waterproof /UV rays resistant/  
suitable for outdoor

### MINI

± 340 g/mq  
100% poliestere Trevira CS  
100% Polyester Trevira CS  
100.000 cicli martindale  
100.000 martindale cycles  
Resistenza al fuoco/Flammability  
CLASSE 1 IM - UNI 9175  
BS 7176  
EN 1021 - 1/2  
BS 5852 /2 - CRIB 5  
California TB 117

### SEALIFE

± 330 g/mq  
100% Poliestere riciclato  
certificato SEAQUAL  
100% Recycled polyester  
SEAQUAL certified  
100.000 cicli martindale  
100.000 martindale cycles  
Resistenza al fuoco/Flammability  
CLASSE 1 IM - UNI 9175  
BS 7176  
EN 1021 - 1/2  
California TB 117

## CATEGORIE 4

### PELLE - LEATHER

100% vera pelle  
100% genuine leather